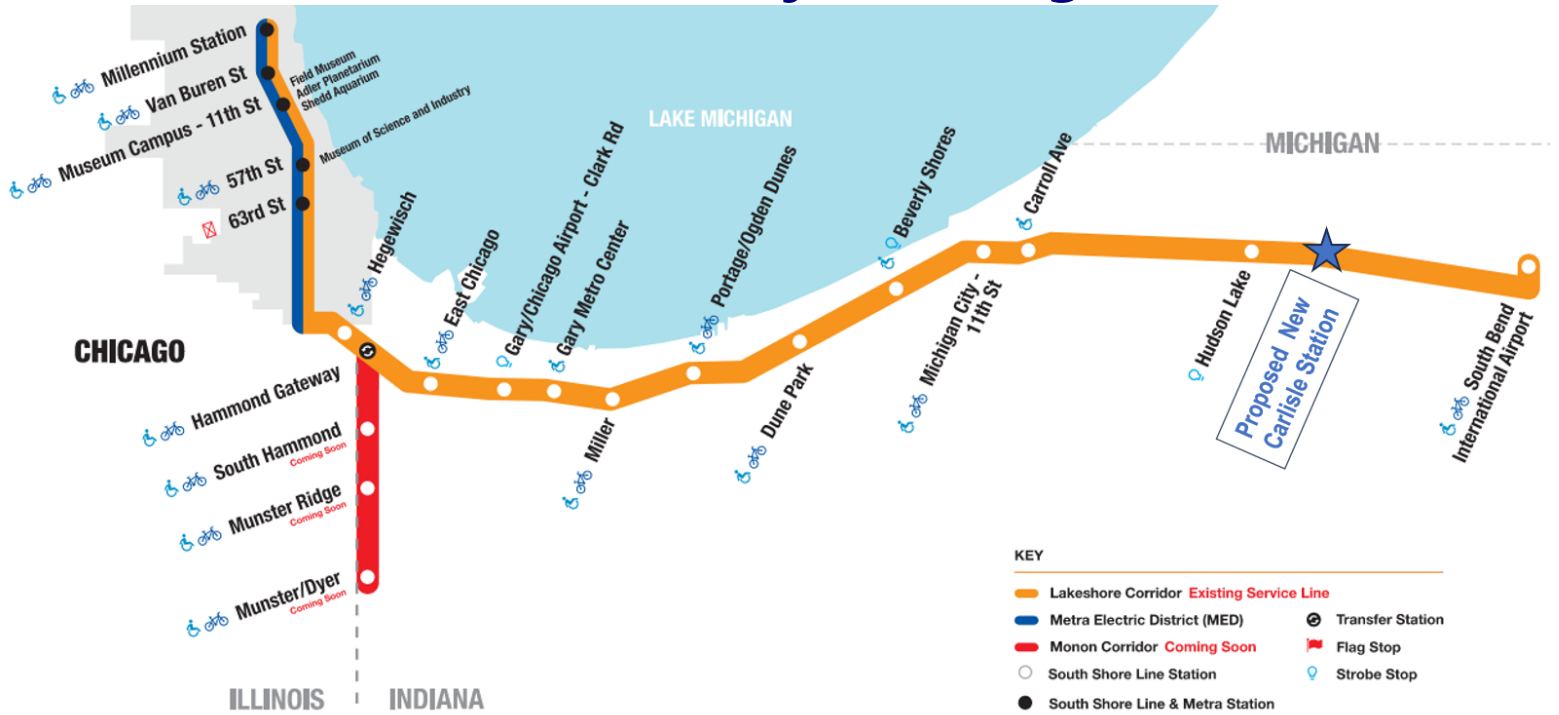


# New Carlisle Station Feasibility Study Update Community Meeting



## Project Background

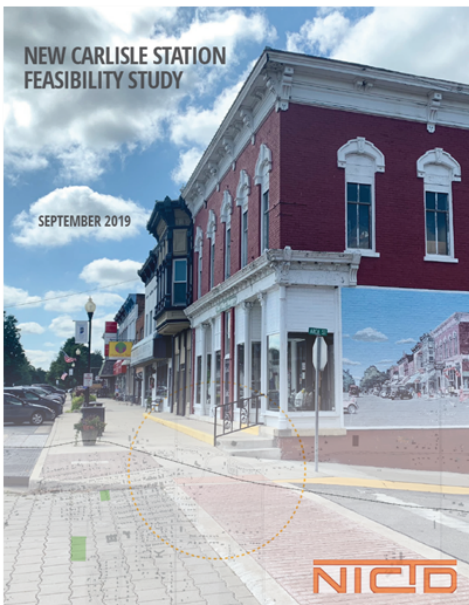
In 2019, a study was launched to explore the feasibility of a South Shore Line station in New Carlisle.

The study concluded that a station in New Carlisle was feasible and would generate sufficient ridership.

An update to the study was initiated in 2024 to re-evaluate the selected station site and account for regional growth, South Shore Line changes, and new ridership trends.



Link to 2019 Feasibility Study



## Station Benefits

### Economic

- Attract new customers and businesses to New Carlisle
- Businesses choose to locate near transit to access larger labor pools<sup>1</sup>
- On average, \$1 invested in transit yields more than \$1 in economic benefits<sup>1</sup>

### Traffic

- Potential to reduce roadway congestion
- Shorter commutes and improved freight delivery times

### Workforce

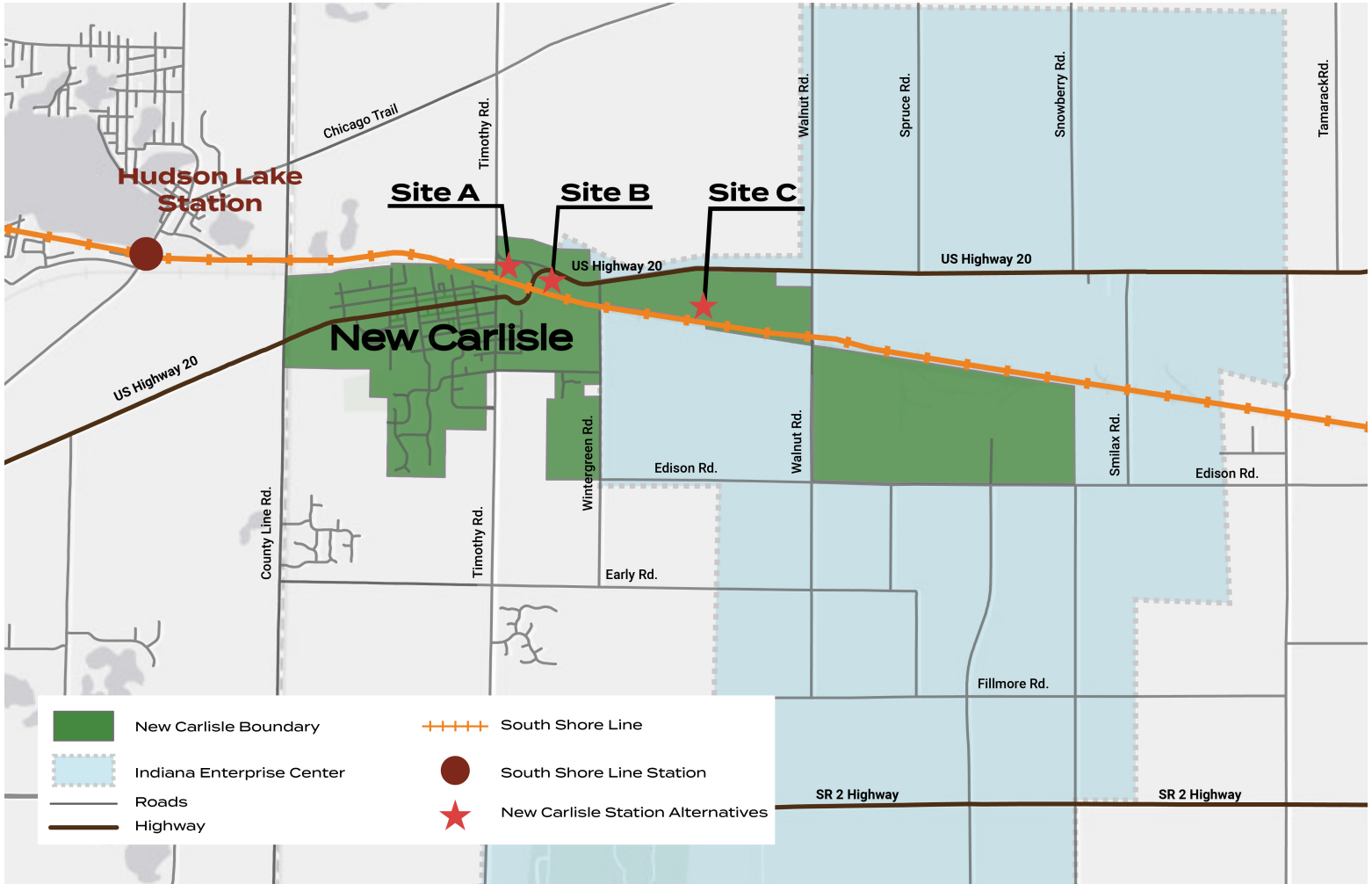
- Large pool of potential workers within a 1 hour train ride
- Last mile options available to connect commuters to workplaces

### Quality of Life

- Access to Chicago, South Bend International Airport, Indiana Dunes National Park, and other destinations
- Reduced vehicle emissions and improved air quality
- Equitable and affordable transportation

1. Metropolitan Planning Council

# Station Location Options



Three sites are currently being evaluated, and one site will be selected for the final analysis:

Site A  
 Located in the southwest corner of Marvel Lane and U.S. 20

Site B  
 Located south of U.S. 20 and east of American Legion site

Site C  
 Located south of U.S. 20 and between Wintergreen Road and Walnut Road

## For more information, please contact

**Terry O'Brien**  
 Director of Economic Development  
 St. Joseph County  
 Department of Infrastructure, Planning & Growth  
 tobrien@sjcindiana.gov

**Eric Neagu, P.E., LEED AP, AICP**  
 Principal  
 Antero Group  
 eneagu@anterogroup.com